

CHDP for LEAs & School Health



Santa Clara County
Office of Education

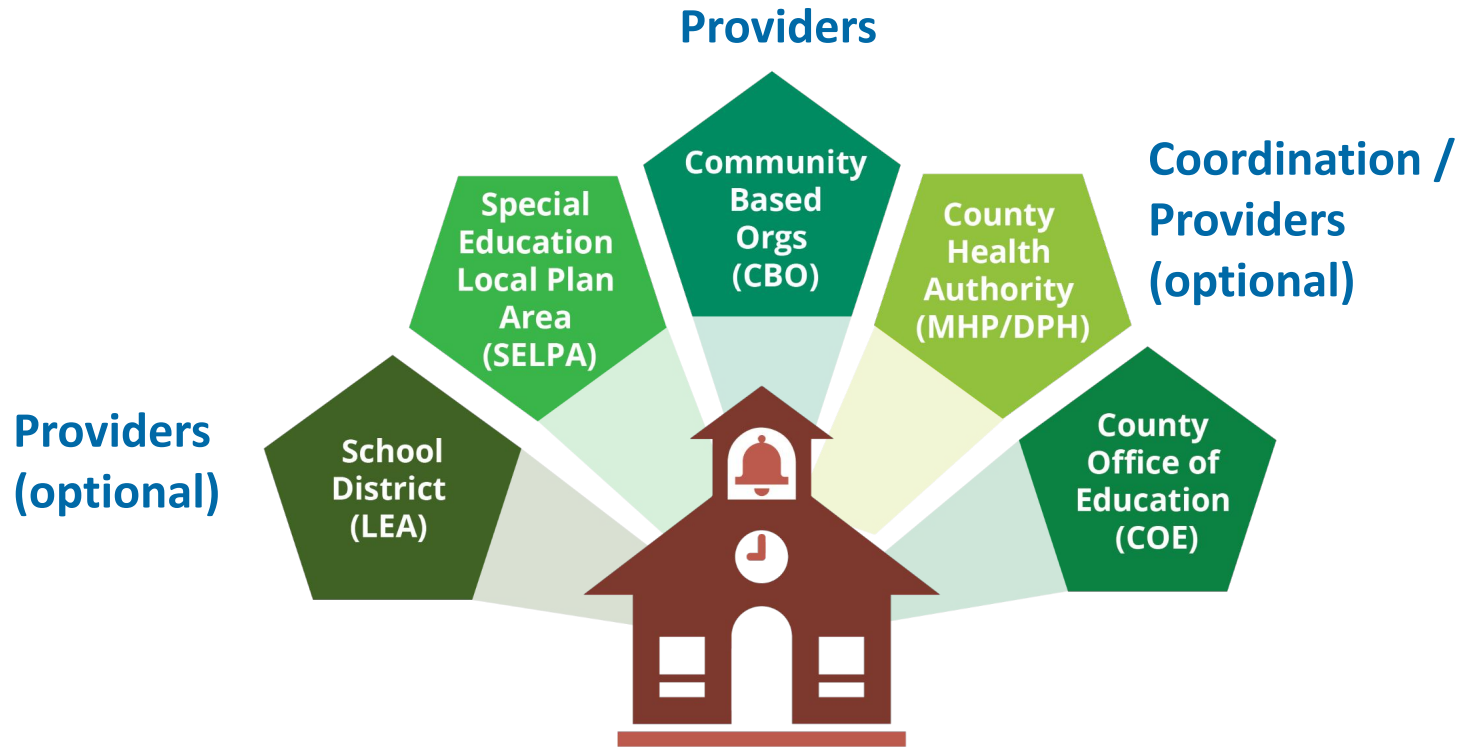
Overview

- Health promotion and disease prevention program designed for primary care delivery system
- Federally mandated health care services for Medi-Cal eligible children and youth
- Coordinated via local health departments

NOT designed for LEAs or school health providers specifically



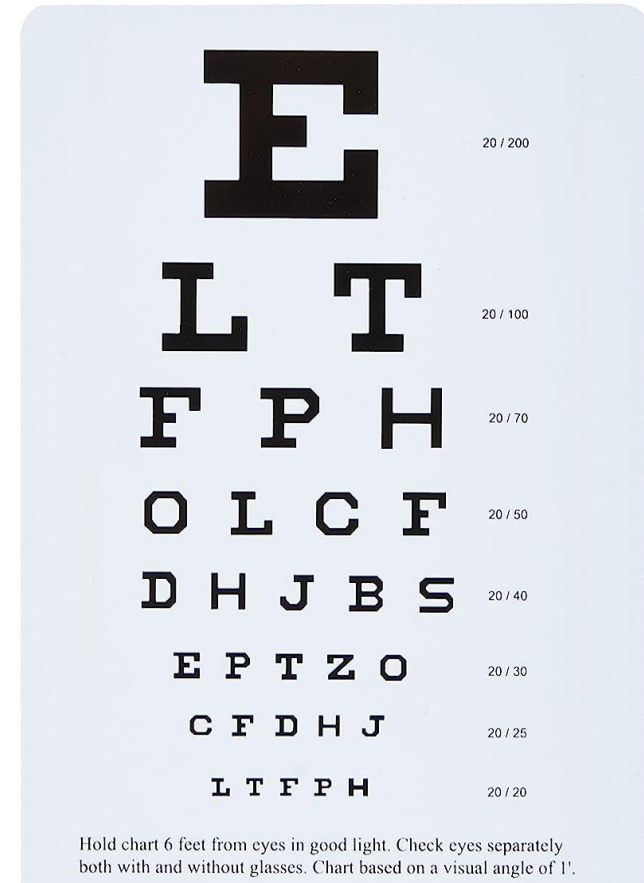
Models of Billing Connected to Schools




Blending any of the 5 Models above

Services Covered

- ❖ Comprehensive health assessments:
 - ❖ health history
 - ❖ physical exam
 - ❖ developmental/nutritional/dental assessments
 - ❖ vision and hearing tests
 - ❖ TB and other laboratory tests
- ❖ Immunizations
- ❖ Health education/anticipatory guidance
- ❖ Referral for diagnosis and treatment



Client (Student) Eligibility

- ❖ Children and youth < age 19 without preventive health insurance
 - ❖ Family incomes < 266% of federal poverty guidelines
 - ❖ No citizenship/immigration requirements
 - ❖ Presumptive eligibility with no proof income
- 

Client/Student Enrollment

- ❖ Parent/guardian must apply
- ❖ Proof of income not required
- ❖ No social security number required
- ❖ Automatic internet application with immediate enrollment confirmation
- ❖ “CHDP Gateway” = temporary full-scope Medi-Cal for up to 2 months, full Medi-Cal application sent to homes



VERY EASY AND FAST

Provider Eligibility & Enrollment

Provider types: MD/DO, Physician Assistant, Nurse Practitioner

- Active Medi-Cal provider number
- Enroll in local CHDP program
- Meet clinician and other licensure requirements
- On-site facility inspection and medical record review

Comprehensive Care Providers

24-hour coverage

year-round availability

better suited for
community-based health
providers

Health Assessment Only Providers

episodic care with linkages

better suited for LEAs

LEA Considerations

PROS

- Good fit with school health role
- Expedites school entry, especially in lower grades
- Consistent with school health
- Help families link to continuous coverage
- Health assessment role is very appropriate for most LEAs

CONS

- Low reimbursement
- Facilities and equipment requirements
- Program is sunseting in 2024*

CHDP in Action (LEA run & LEA partnered)

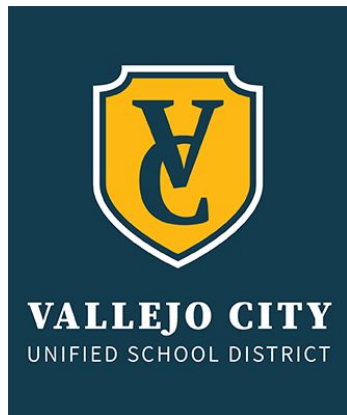


CHINO VALLEY
UNIFIED SCHOOL DISTRICT

Student Achievement • Safe Schools • Positive School Climate
Humility • Civility • Service



Newport-Mesa
Unified School District



and many many more

Pending Changes



- 2024 transition to the “Children’s Presumptive Eligibility Program (CPE)”
- All active CHDP providers will be automatically enrolled as CPE providers with local MHPs
- Providers must continue to meet the monitoring and oversight requirements

Resources

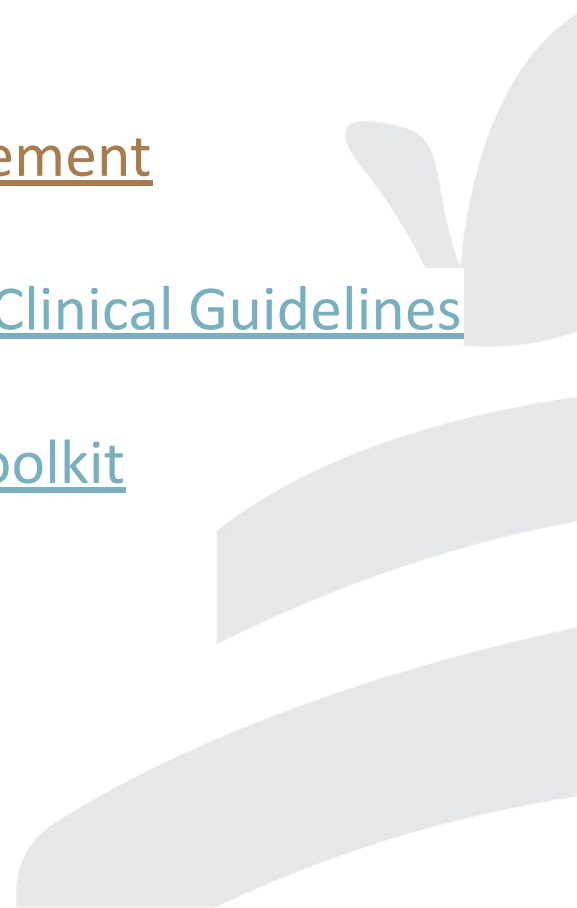
[CHDP County Offices](#)

[CHDP Program Assessment Provider Application](#)

[CHDP Health Assessment Provider Program Agreement](#)

[American Academy of Pediatrics - Bright Futures Clinical Guidelines](#)

[CSHA's Maximizing Third Party Reimbursement Toolkit](#)



Putting Health Care in Schools

The California School-Based Health Alliance is the statewide non-profit organization dedicated to **improving the health & academic success of children & youth by advancing health services in schools.**

Learn more:
schoolhealthcenters.org



CSHA is here for you!



Explore our resources on funding, sustainability, start-up, outreach and more

Reach out with any specific questions

STAY CONNECTED



schoolhealthcenters.org



info@schoolhealthcenters.org



[sbh4ca](https://twitter.com/sbh4ca)



[sbh4ca](https://www.instagram.com/sbh4ca)



Santa Clara County  Office of Education



scoec.org/plisd/yhw



youthhealthwellness@scoec.org

Gracias

謝謝

Thank you

Cảm ơn

Salamat

aranger@schoolhealthcenters.org